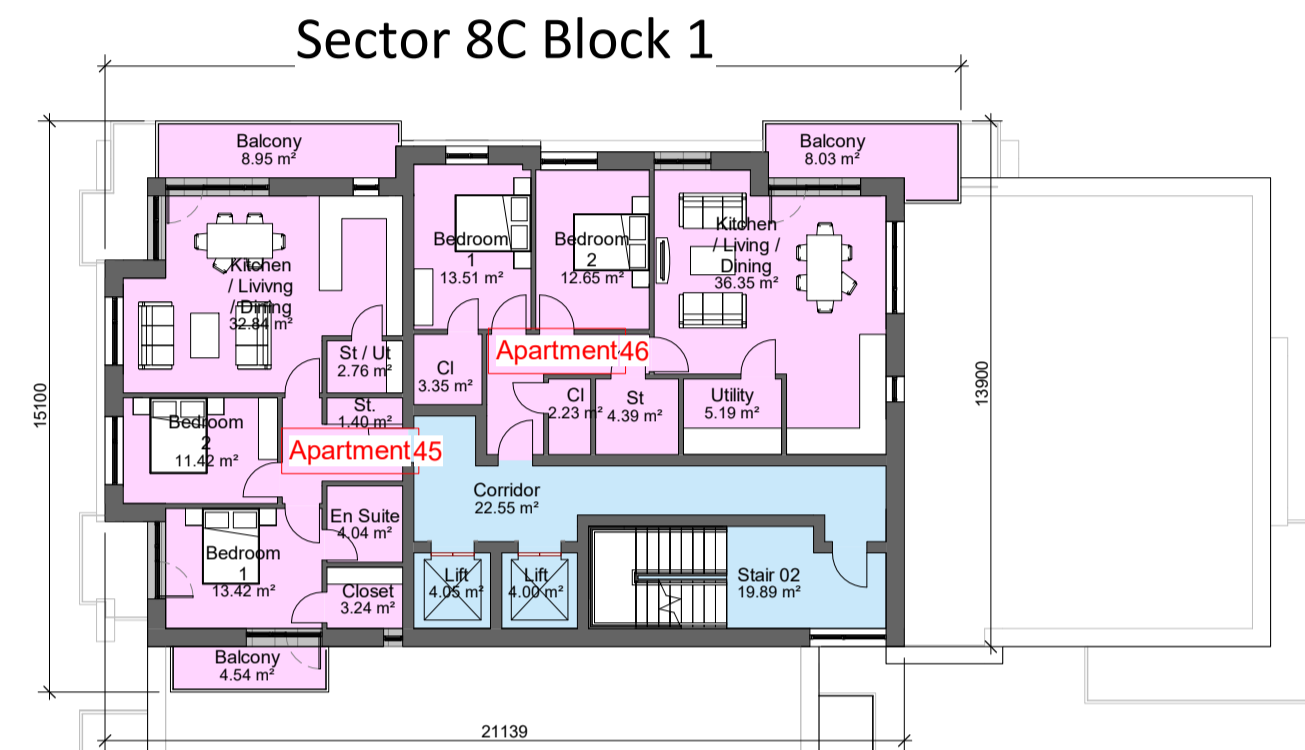
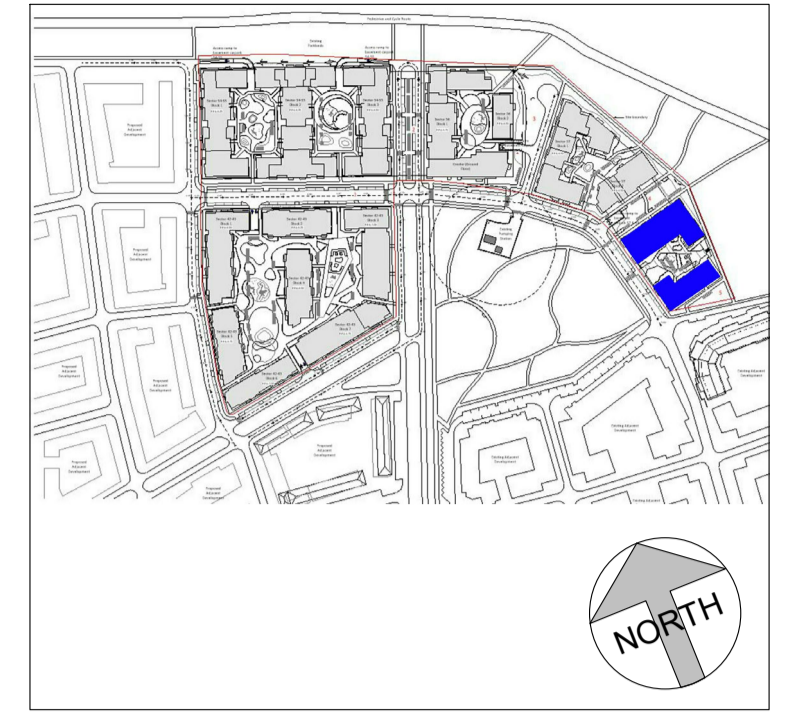
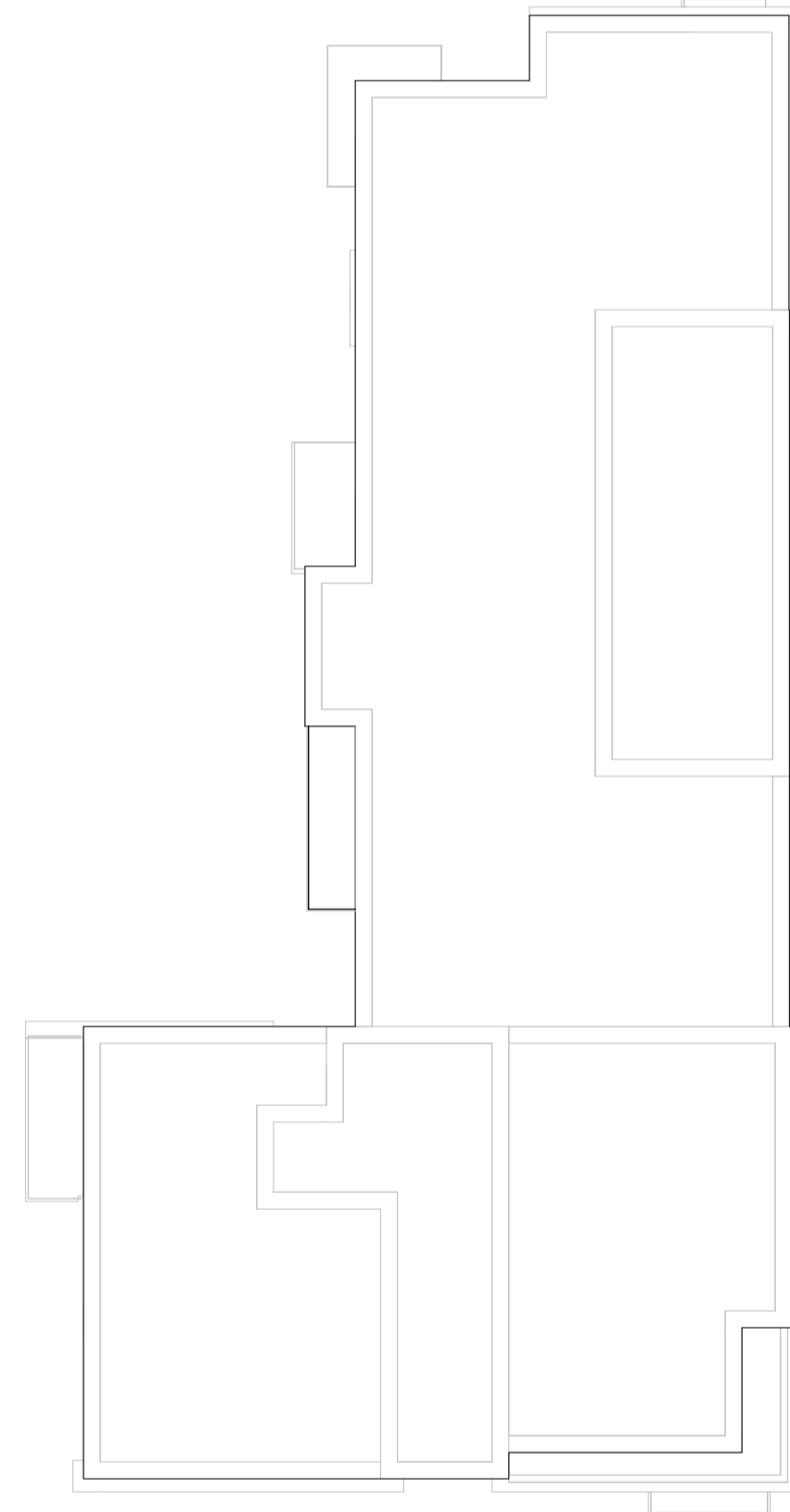


Bicycle Storage (sector 8C) at g.l. 68 units

SECTOR 8C- Apartments by Type						
StairCore	Studio Apartment	1 Bed Apartment	2 Bed 3 Person Apartment	2 Bed 4 Person Apartment	3 Bed Apartment	Total
	0	0	0	0	0	0
1	0	9	0	18	0	27
2	0	0	0	16	5	21
3	0	4	0	8	0	12
4	0	0	0	10	0	10
	0	13	0	52	5	70

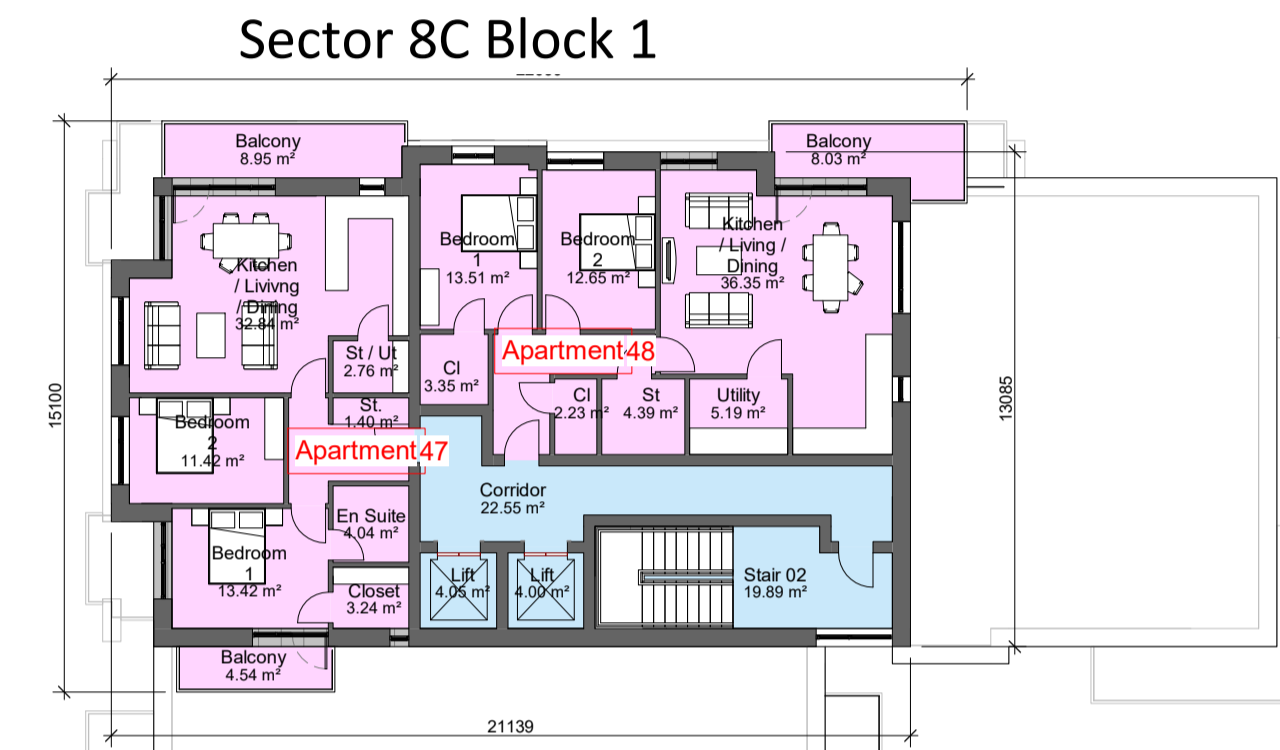
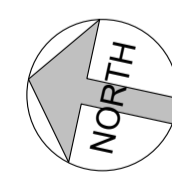


Sector 8C Block 2

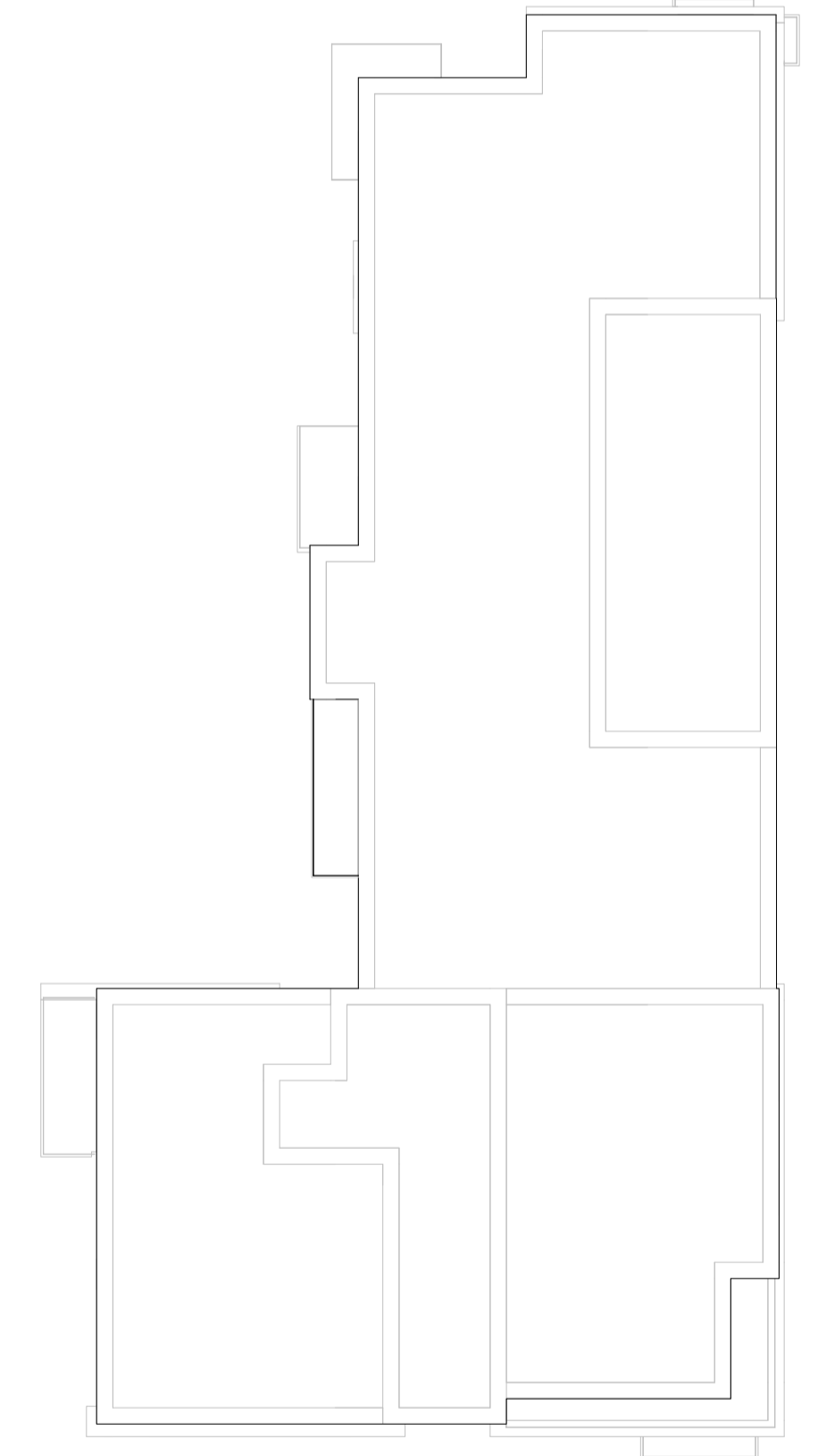


06 Sixth Floor Plan

1 | 1 : 200

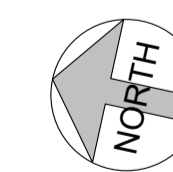


Sector 8C Block 2



07 Seventh Floor Plan

2 | 1 : 200



Rev. No.	Date	By	Description	STATUS SUITABILITY CODES
P01	17/12/2021		Issued for Planning	S0 Work in progress
P03	11/03/2022		Issued for Planning	S1 Shared - for Co-ordination S2 Shared - for Information S3 Shared - for Review & Comment S4 Shared - for Stage Approval S6 Shared - for Project Information Model S7 Shared - for Asset Information Model
				D1 Suitable for Costing D2 Suitable for Tender D3 Suitable for Contractor Design D4 Suitable for Procurement
				An Published - Approved & Accepted Complete Bn Published - Partially signed off with comments CR Published - Construction Record

NOTES:

Lacken House, Dublin Road, Kilkenny R95 KF34
Tel +353 (0)56 776 1591
E-Mail: info@cch-architects.com

© Drawing copyright CCH Architects Ltd. Not to be copied, reproduced or distributed without prior consent of CCH Architects Ltd.

NOTE: All dimensions to be checked on site. Do not scale this drawing. Use figured dimensions only. To be read in conjunction with all other relevant project drawings and documents including from other consultants.	
stage	PLANNING
status	revision no.
project ref.	P03
	20003

CLIENT	Lismore Homes Ltd
PROJECT	GA2: Residential Development Baldoyle
DWG TITLE	Sector 8C_Sixth & Seventh Floor Plans
Date	17/12/21
Drawn	R RYAN
Scale	1 : 200
@ A1	drawing no. BALN5 -CCH -00 -ZZ -DR -A -203